

OFFICE FOR LEASE

Pacific Corporate Center

15862 SW 72nd Ave, Suite 200, Portland, OR 97224
Building A



Key Features



9,558 sq. ft. office

Two suite entrances directly off elevator

Large private offices

Two restrooms

End cap with great exposure at intersection

Updated finishes and landscaping

Immediate access to I-5

Walkable environment offering a variety of amenities including rotating food trucks, Starbucks and Gold's Gym

Lease Rate:

**\$30.00/sq. ft.
full service**

Jake Bigby

jakeb@pactrust.com

Caitlin Knecht

caitlink@pactrust.com

503.624.6300

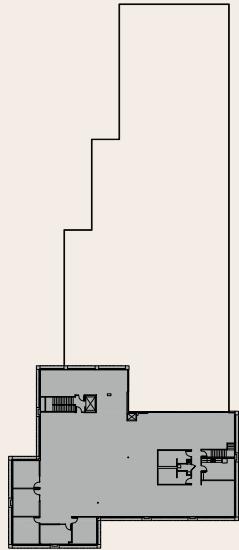
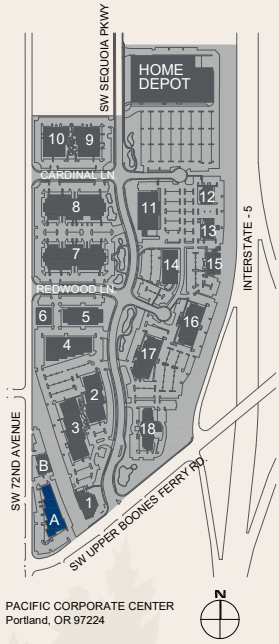
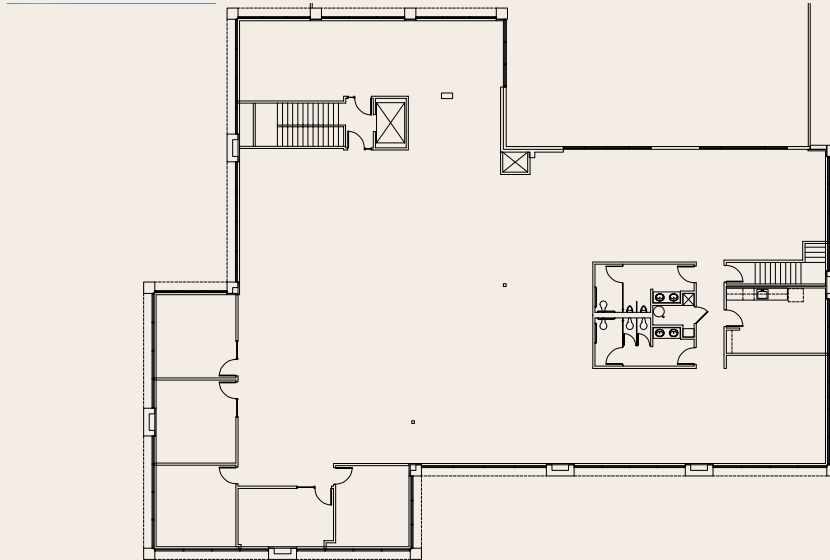
Owned & Managed by

PACTRUST

Space Plan

15862 SW 72nd Ave, Suite 200, Portland, OR 97224

9,558 Sq. Ft.



BUILDING PLAN

Jake Bigby
jakeb@pactrust.com

Caitlin Knecht
caitlink@pactrust.com

503.624.6300
www.PacTrust.com